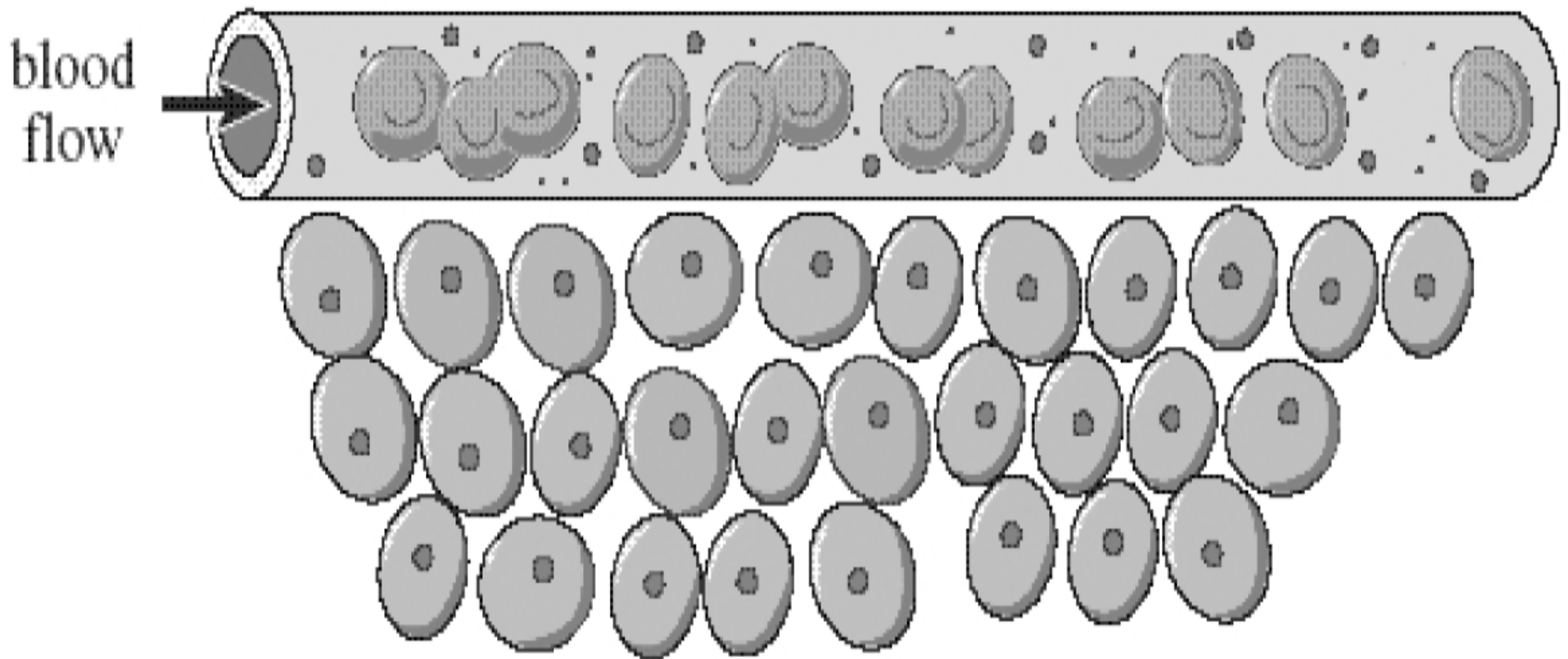


Written Response

Instructions

Answer the following questions.

1. On the following diagram, label the arteriole end of capillary, the capillary, the cells, the tissue fluid, and the venule end of the capillary. Also indicate the side of the capillary bed where blood pressure exceeds osmotic pressure and the side where osmotic pressure exceeds blood pressure.



2. Write an explanation of how conditions inside the capillary bed allow for the exchange of nutrients and wastes between the capillary and the tissue fluid.
3. At which location in the circulatory system is blood velocity the slowest? Explain why this is beneficial to us. In your opinion, are the capillary beds the most important part of the circulatory system? Explain.
4. Describe the differences between the pulmonary and the systemic circuits.
5. At which point do veins carry oxygenated blood?

Last modified: Monday, 12 May 2014, 08:10 AM

You are currently using guest access ([Login](#))